



REPURPOSING INSTEAD OF THROWING AWAY

Circular economy at OPED

A large, semi-transparent circular graphic composed of several thick, curved segments arranged in a circle, resembling a gear or a circular path. The OPED logo is centered within this graphic.

OPED
Keeps you going.



OPED KEEPS YOU GOING



Stefan Geiselbrechtiger • CEO of OPED

We work with enthusiasm and a clear vision of the future to be able to accompany patients until they are fully recovered. By increasing the number of digital solutions offered by our international subsidiaries and the merger with medical supply stores, we have been able to tap into new markets.

What started with the VACOped foot orthosis in 1992 became a comprehensive orthotic care system for feet, hands, shoulders and knees. Customisable products and environmentally friendly production of the orthoses are the hallmarks of OPED. Added to this are increasing digital solutions in the areas of patient information and rehabilitation.

By combining forces with medical supply stores, OPED ensures local care for patients throughout Germany. As a manufacturer and service provider, OPED is thus close to the patient and can therefore provide both products and services quickly, effectively and comprehensively.

Thanks to the sophisticated therapeutic concept, all of the products deliver added value for patients. And therefore also for the treating physician and health insurance company.

REPURPOSING INSTEAD OF THROWING AWAY

A particularly important concern for us is the material economy of our products. This is because everything we produce from scratch consumes raw materials. On a planet with finite resources, we need to move away from the throw-away mentality so that we can continue to act in the future.

One possible approach is to use orthoses and re-integrate them into the product cycle instead of producing them cheaply and throwing them away. Our approach is waste prevention.

That's why we've been taking back orthoses from patients since 1995 of the patient. We process the components for re-use or recycling. This not only saves resources, but also minimises the emissions of Greenhouse gases.

Waste prevention is a process for society as a whole. We are doing our part to ensure that the Earth remains a viable planet in the future.

SUSTAINABLY MANUFACTURED MEDICAL DEVICES FIGURES, DATA, FACTS

180 t Material that is prepared for a new life cycle as a medical device and not newly manufactured.

9 t material that can be made into new material through cleanliness and single-origin sorting.

“
**INDIVIDUALLY,
WE ARE ONE
DROP. TOGETHER,
WE ARE AN
OCEAN.**
”

Ryunosuke Satoro
Japanese writer

OPED FOR THE ENVIRONMENT

An eco-conscious approach to the manufacture of our products is important to us. So since 1995, we have been minimising resource consumption by recycling the orthoses returned by patients in Germany. A 1,250 m² area was set up for this purpose in 2018. In 2022, this saved 180t of material that did not need to be produced again from scratch.

The recycled components are added to the new production and each patient receives a new orthosis compliant with the highest hygienic requirements.

The recovery of raw materials and orthosis production in Germany makes OPED more independent of international supply shortages. OPED is therefore more flexible and agile than other companies in terms of production.

VALUABLE INCLUSION OF PEOPLE WITH DISABILITIES

Since 2012, a fully integrated working group of the Oberlandwerkstätten Miesbach has taken over a large part of the recycling process.

The group of employees comprises 19 people with disabilities and two supervisors of the Oberlandwerkstätten.

This cooperation is a successful example of the employment of people with disabilities close to the primary labour market. This makes OPED the only orthosis manufacturer that not only saves resources, but also creates jobs for people with disabilities.

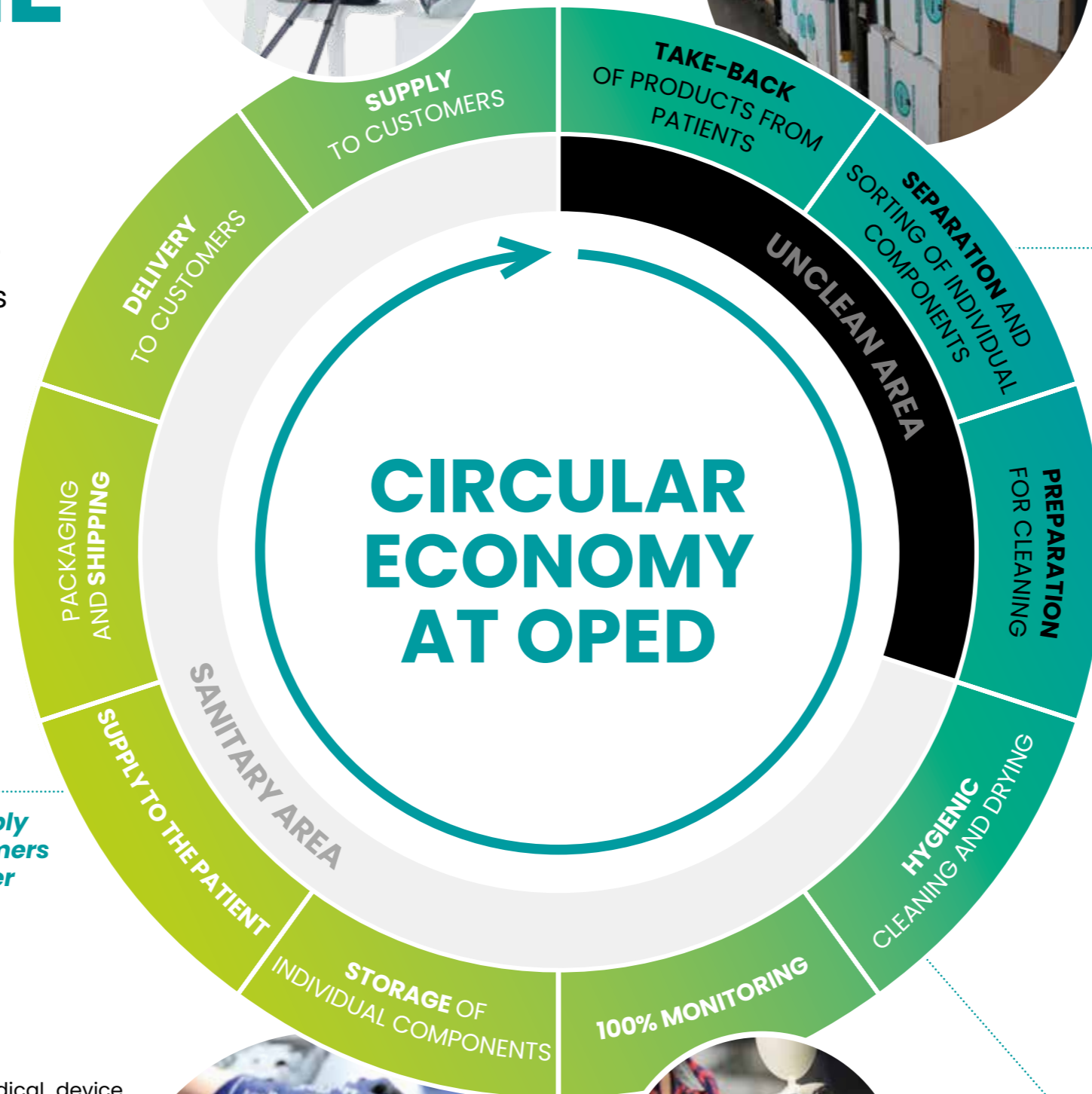


GLIMPSE BEHIND THE SCENES

Most of our sustainability concept involves the recycling process for our orthoses. We have been following this path since 1995 to save on resources and protect the environment during the manufacture of our products.



New assembly when customers place an order



Specially adapted cleaning programmes guarantee hygienic requirements



DELIVERY OF MEDICAL DEVICES

Every day, approximately 700 foot orthoses (VACOPed, VACOPedes, VACOPed Short) and other orthoses such as knee or shoulder orthoses, motion splints and devices arrive by post at OPED, having been sent in by patients.

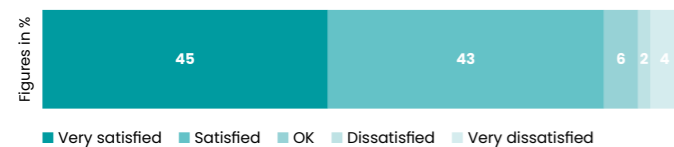
The delivery area is separate from the other areas such as assembly, storage and shipping, so as to meet the hygienic requirements for our newly manufactured medical devices.

PATIENT SURVEY ATTESTS TO EXCELLENT QUALITY AND HIGH COMPLIANCE

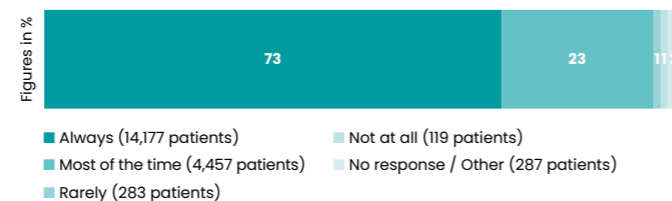
If the feedback form has been completed by the patient, it is removed from the box with the orthosis, scanned and evaluated by the quality management team. The feedback from patients allows us to offer the best care in future too, for example with regard to handling and comfort.

All results are summarised in our Results Quality Report, which we would be happy to provide on request.

How satisfied were you with the OPED product? (n=99,447)



Did you use the product as you were told by your doctor? (n=19,323)



Top 20 positives (all products)



DISMANTLING THE ORTHOSES & PREPARING THEM FOR CLEANING

When a VACOPed is recycled, the orthosis is dismantled into 37 individual parts and collected in boxes. Components that have had direct physical contact with the patient, such as covers, are disposed of.

Out of all the orthoses that come back to us, we can re-integrate around 120 different parts into the production cycle. This even includes the carrier straps of the product boxes, which are washed, disinfected and reused on new boxes.



SUPPORT FROM PEOPLE WITH DISABILITIES

The orthoses are dismantled by the company-integrated working group of the Oberlandwerkstätten. People with disabilities take over the activities according to their abilities. In order to simplify the operation, complex production processes are strictly divided into individual work steps. Technical aids or modified tools are also used. Through the well-defined and recurring tasks, employees are able to work independently and the working group is integrated effectively into the production process.



Large components of the orthoses are removed and sorted for cleaning and disinfection in washer-disinfection system, of the type also used in hospitals for processing instruments, for example. For cleaning, the individual components are placed in specially manufactured machine baskets. Over the years, we have developed a custom fitting pattern for each of the individual parts, so that no areas are missed. Smaller and soft parts are washed and disinfected in industrial washing machines.



SPECIALLY ADAPTED CLEANING PROGRAMMES GUARANTEE THE HYGIENIC REQUIREMENTS

In cooperation with the machine manufacturer Miele®, we have developed specially adapted washing programmes in which temperature and chemistry have been specially adapted to our parts and hygienic requirements.

The washer-disinfector system and the washing machines serve as a sluice between the unclean and sanitary area. In the unclean area, the machines are loaded with the soiled orthosis components and they are then removed, cleaned, in the sanitary area.

The dryer programmes have also been modified by Miele® for us and the dryers are equipped with a special, more powerful motor to dry the orthosis parts slowly and carefully.

After cleaning, the parts are again individually checked and sorted if necessary. However, the majority of the sorted parts are not disposed of, but rather are collected, shredded and then flow proportionately into the injection-moulding production of new parts. As a result, a further approx. 9 tonnes of rubbish can be saved per year.



QUALITY CONTROL

The hygienic effectiveness of the fitting patterns and the adapted washing and drying programmes are checked by means of regular bioindicator tests, contact tests and a 100% visual inspection after the washing and drying process.

Certified quality management system

OPED is subject to the EU Medical Devices Regulation (MDR) and complies with all of its requirements.

OPED's certified quality management system, required by the regulation, satisfies DIN ISO 13485:2016.

STORAGE OF THE COMPONENTS

The fully cleaned and tested components are stored for a new lifecycle in our high-bay warehouse in one of the 18,000 pitches.



NEW ASSEMBLY

If a customer orders a product,
it is **NEWLY** assembled
and delivered just in time.





Keeps you going.

OPED GmbH

Medizinpark 1
83626 Valley/Oberlaindern
Germany
Phone +49 8024 60818-210
Fax +49 8024 60818-299
mail@oped.de
www.oped.de

OPED AG

Hinterbergstrasse 26
6312 Steinhausen
Switzerland
Phone +41 41 748 53 35
contact@oped.ch
www.oped.ch

OPED UK Ltd

Unit 5
Avro Business Centre
Avro Way
Bowerhill
Melksham
SN12 6TP
United Kingdom
Phone +44 1380 722177
enquiries@oped.biz
www.oped-uk.com

Orthopaedic Appliances Pty Ltd

OAPL an Oped company
26-32 Clayton Road
Clayton, Vic 3168
Australia
Phone +61 1300 866 275
Fax +61 1300 627 539
info@oapl.com.au
www.oapl.com.au

OPED Medical, Inc.

444 Tom White Road
Braselton, GA 30517
USA
Phone +1 (770) 945 - 0150
Fax +1 (770) 945 - 0370
info@opedmedical.com
www.opedmedical.com

